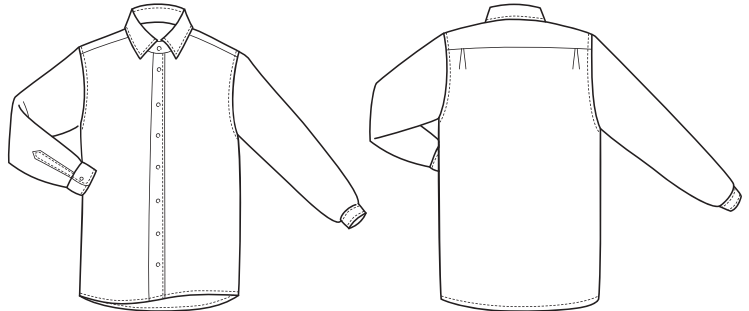


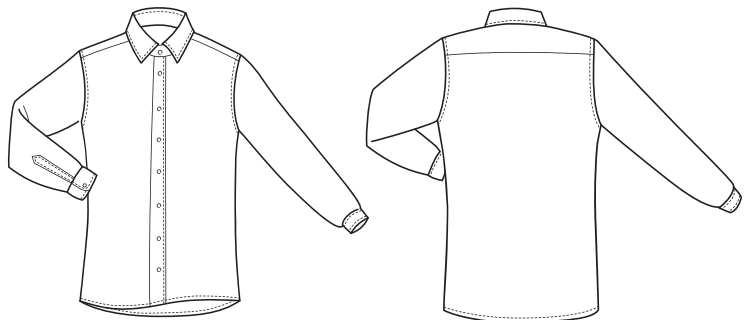
CUSTOMIZE YOUR SHIRTS

BODY FIT

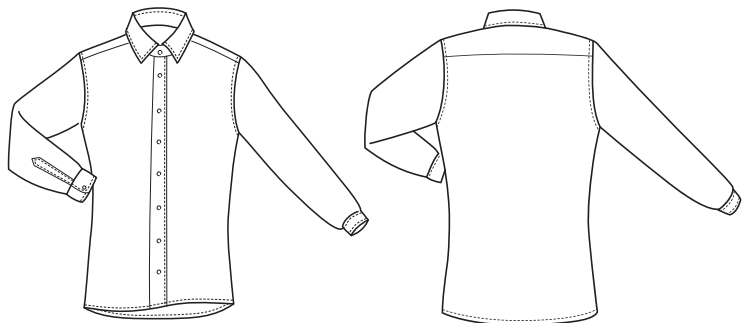
NR 1 IN CODE	BODY TYPE
R	REGULAR (scale 1)
A	REGULAR (scale 2)



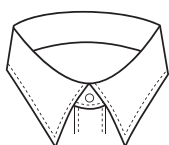
NR 1 IN CODE	BODY TYPE
S	SLIM (scale 1)
B	SLIM (scale 2)



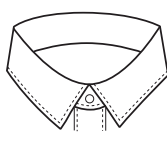
NR 1 IN CODE	BODY TYPE
Z	EXTRA-SLIM (scale 1)
E	EXTRA-SLIM (scale 2)



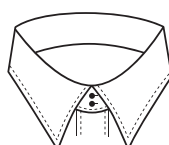
COLLAR



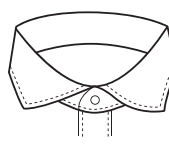
CLASSICAL
COLLAR
K1



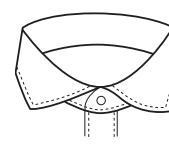
SMALL
CLASSICAL
COLLAR
K2



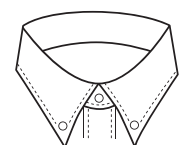
CLASSICAL
COLLAR WITH
TWO BUTTONS
K4



CUTAWAY
COLLAR
W1



SMALL
CUTAWAY
COLLAR
W3

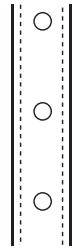


BUTTON
DOWN
COLLAR
N1

FRONT PLACKET



TOP-STITCHED
FRONT
T5

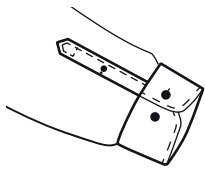


FRONT PLACKET
L5

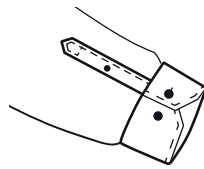


PLAIN FRONT
F5

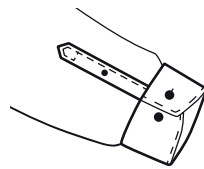
CUFFS



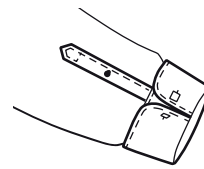
ROUND CUFF
CODE: VU



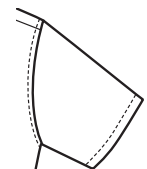
6-CORNER
CUFF
CODE: VG



ROUNDED CUFF
CODE: VY

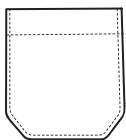


ROUND FRENCH
CUFF
CODE: VL

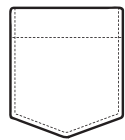


SHORT SLEEVES
CODE: LA

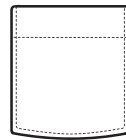
POCKET



6-CORNER POCKET
CODE: 6



5-CORNER POCKET
CODE: 5



ROUND POCKET
CODE: 4

INTERLINING

- HARD
- SOFT

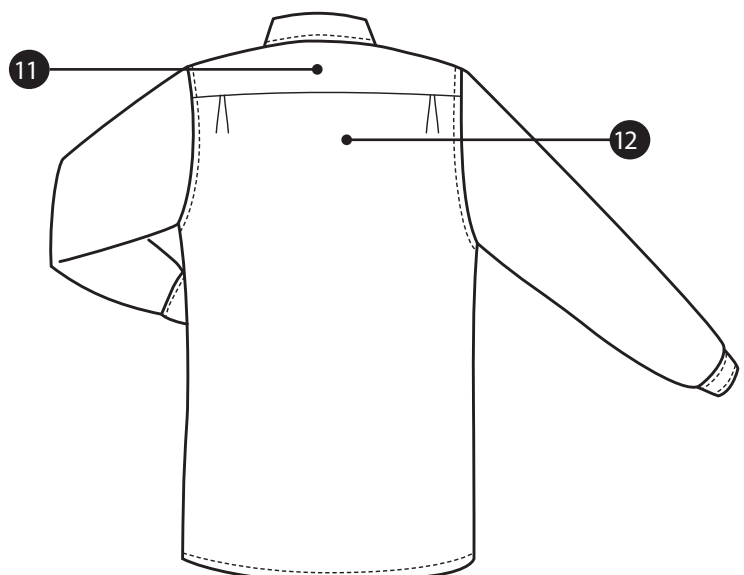
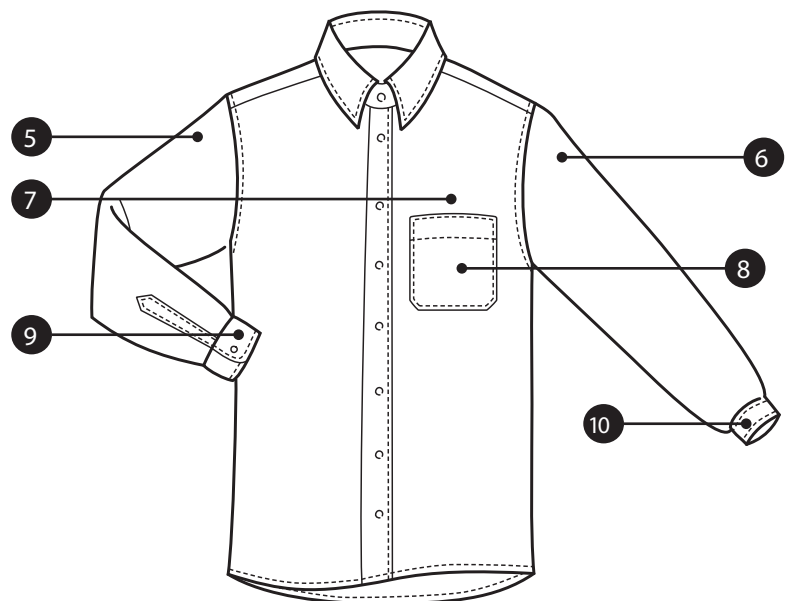
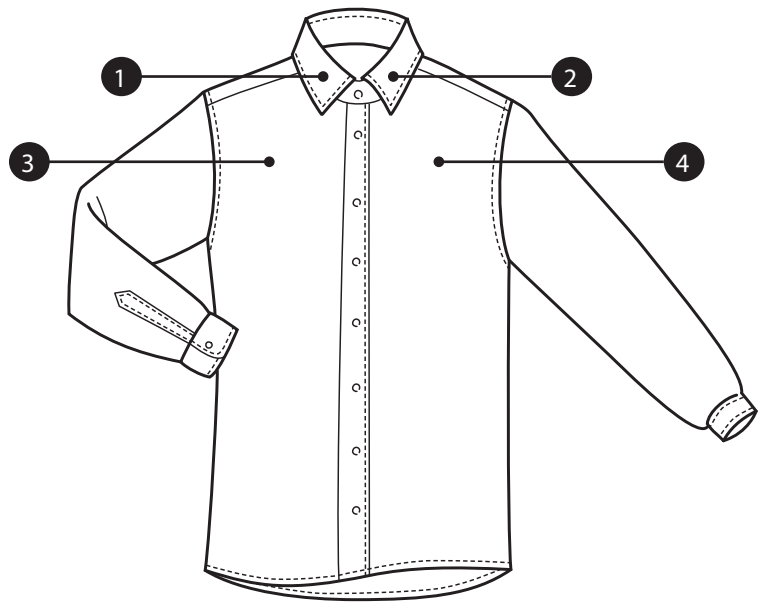
CODE EXPLANATION

	BODY TYPE	COLLAR	FRONT PLACKET	SLEEVE LENGTH	CUFF	POCKET QUANTITY	POCKET SHAPE	CONTRAST OR NOT
CODE PLACE	1	2	3	4	5	6	7	8
SAMPLE	S	K1	L5	V	U	1	6	Y

INFORMATION ON EMBROIDERY

TO ORDER EMBROIDERY, PLEASE SUBMIT THE FOLLOWING INFORMATION:

- the desired location of the embroidery;
- the logo in electronic form (preferably in a vector format);
- the dimensions of the embroidered patch. Horizontal dimension in millimetres is enough. Other dimensions will be increased or decreased proportionally;
- Pantone codes of the colours to be used in the logo. If the order does not indicate the codes, similar colours will be chosen.



-
1. ON THE RIGHT CORNER OF THE COLLAR
 2. ON THE LEFT CORNER OF THE COLLAR
 3. ON THE RIGHT FRONT SIDE
 4. ON THE LEFT FRONT SIDE
 5. ON THE RIGHT SLEEVE
 6. ON THE LEFT SLEEVE
 7. ABOVE THE POCKET
 8. AT THE CENTER OF THE POCKET
 9. ON THE RIGHT CUFF
 10. ON THE LEFT CUFF
 11. ON THE YOKE
 12. ON THE BACK